



# Is your data AI-ready?

Prepare, store, manage, and access data across hybrid cloud

All around the globe, AI is driving transformation in ways never experienced before. Organizations across industries are leveraging AI to achieve faster innovation, drive faster times to market, and gain a competitive advantage.

**Data is the key to leveraging the vast potential of AI. But not just any data. You need AI-ready data.** Whether you're using off-the-shelf AI models, or if you're further along in your AI journey, it's important to create a data foundation that will give your AI model the results you can trust. Your data also needs to be prepared, stored, managed, and accessible across hybrid cloud. In this way, you can use this data to fuel your organization — as you strive to accelerate innovation, create new revenue models, and enhance productivity.

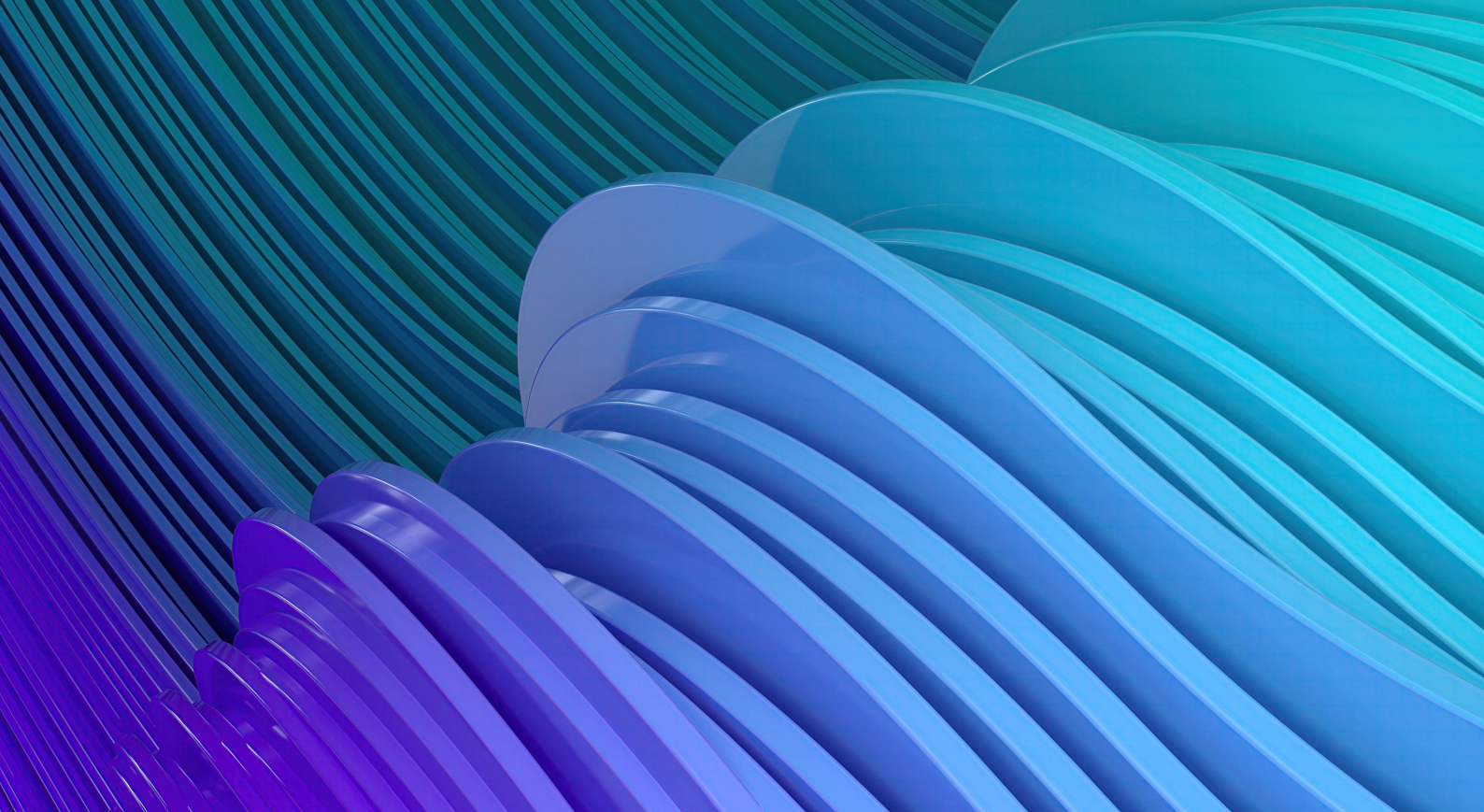
## Discover the benefits

Having AI-ready data means you're ready to reap benefits faster — with data types and formats optimized for successful AI deployments. You can access data, data analytics, and AI tools to gain insights and uncover hidden patterns, trends, and anomalies. Your model training will be dramatically faster and deliver reliable, accurate predictions, as you confidently harness data that's consistent, secure, and compliant.

What's more, you can empower your data users, data scientists, and machine learning (ML) practitioners with direct access to all your data stored across multiple locations and formats. With AI and automation, your analysts can focus on higher level analytics and problem solving. And your data scientists can collaborate quickly and easily, freer to focus on new ways to drive innovation.







## What you can accomplish once your data is AI-ready

### **Seamlessly access, analyze, and govern data globally**

You can abstract data away from infrastructure to improve access and visibility, making it easier for users to find and access what they need, regardless of where it's located. Enhance data quality and consistency by removing duplicate data sets. Manage your data and secure it across hybrid environments with policies that globally enforce management, sovereignty, data access, and security. And connect and combine data from traditional and legacy sources to provide your teams with comprehensive data ready for analysis.

### **Automate data pipelines and accelerate time to ML model production**

Save your data engineers' time by automating ML and large-scale sophisticated data transformations without rewriting code. Run any type, size, or scale of data. And help ensure reproducibility and compliance as you address use cases like natural language processing, image/video processing, genomics analysis, IoT, and risk analysis.

### **Accelerate demanding, data-intensive workloads with enterprise performance at scale**

You can power your large-scale AI workloads as they grow and evolve by meeting the storage demands of every stage of the AI data pipeline. Supercharge your most data-intensive AI workloads with enterprise performance, scale, and availability. As you utilize the massive amounts of file data across your hybrid cloud, your data users are empowered to collaborate.



# Don't let complexity and challenges stand in your way

Looking across the AI lifecycle from one end to the other, you'll see a data pipeline that's complicated and complex. Data is often hard to access and exists in varying formats, which in turn makes it difficult for data users to create value from that data. As you advance with AI, taking the necessary steps to be AI-ready will help you address data-specific challenges like these:

## Data silos

Persistent islands of data include structured and unstructured data that are inconsistent and siloed across hybrid cloud.

## Data decay

Timeliness of data is key. The reality is that data can lose value when it becomes stale or takes too long to access.

## Performance at scale limitations

Shortcomings exist in current environments where you can scale capacity, but you can't scale performance linearly to match that capacity.

## Data pipeline issues

Processing data, preparing data, and sequential processing can quickly become increasingly time consuming.



## Data lineage and reproducibility limitations

If models can't be reproduced, they can't be trusted. When data lineage and versioning can't be verified, compliance concerns arise.



## Storage proliferation

With tiered data pipelines, data must be copied from tier to tier before AI training can begin, creating challenges and making it difficult to extract aggregate data value.



## Complex management

Current on-prem file storage requires specialized domain expertise, keeping IT and data scientists tied up in routine tasks rather than focused on strategic initiatives.



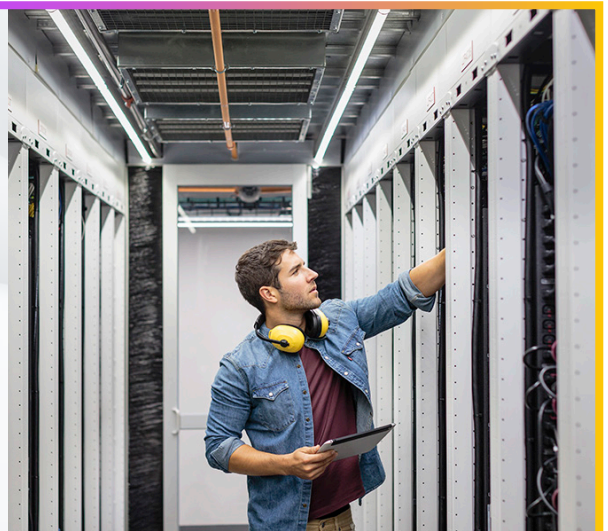
## Lack of efficiency

Data-intensive AI models have an insatiable appetite for storage capacity, rack space, and power consumption.

**Prepare, store, access, and manage your data with the right performance, simplicity, and scale to adjust to the new demands AI places on your organization**

### AI-ready data means you can:

- **Store, prepare, and manage** your data for AI applications
- **Access, manage, and organize** large hybrid data sets across diverse locations and formats for successful AI deployments
- **Maintain** data consistency
- **Meet** the performance, scale, and availability challenges of data-intensive AI workloads
- **Automate** data pipelines
- **Process** any type of structured and unstructured data, so you can build better models







## **Make your data AI-ready with Hewlett Packard Enterprise**

**Here's how HPE can help you get your data AI-ready:**

### **Build your data foundation for AI**

Using data fabric technology, HPE can interconnect your hybrid data sources. This enables your organization to seamlessly access, analyze, manage, and govern data — regardless of location — to feed your AI workloads. You can synchronize data across environments to develop and run in production where it makes the most sense, without migrating data. The ability to automate management, security, and governance policies enables your teams to focus on delivering the insights your business needs.

### **Automate and scale complex data pipelines for ML models**

Part of being AI-ready is having the ability to process any type of structured and unstructured data, so you can build better models — without rewriting code. By utilizing a scalable data pipelining solution from HPE, you can use any data type, any code, on any platform. And you can capture data lineage by versioning data, pipelines, and code so that any output or artifact can be reproduced and audited. You can also reduce compute costs by automatically processing incremental data changes, as you decrease processing time.

### **Meet the performance challenges of data-intensive AI workloads**

Accelerate AI data pipelines and speed time to insight by selecting a scale-out file storage solution for AI designed for high performance at exabyte scale. You can slash your AI storage costs, power usage, and carbon footprint with industry-leading data reduction, nondisruptive upgrades, and an AI storage as a service consumption model. You'll be able to scale performance and capacity independently for higher efficiency at lower cost. And simplify data management to transform faster with an intuitive cloud operating experience — from deployment to file share creation to upgrades.





**Every organization is at a different stage of using AI to transform. From getting data AI-ready, to quickly getting value from your first AI initiatives — to training, tuning, and inference across the complete AI lifecycle at scale — HPE can help you create your AI advantage.**

Unlocking the full potential of AI and analytics across hybrid cloud requires a robust data layer and storage infrastructure designed to handle diverse data types and sizes. HPE empowers your business with:

- **Hybrid-optimized foundation** to help ensure consistent performance and manageability by building for the complex data landscape of hybrid cloud
- **All-encompassing data support** to handle diverse data types and formats to help eliminate integration hurdles and help maximize analytical output
- **Unparalleled data governance** to provide complete audit trails and versioning to help ensure trust and transparency in your data ecosystem
- **Scale-out AI storage** to accelerate AI workflows and optimizing GPU compute and networking with peak performance, simplicity, and efficiency at scale

Ready to unleash the power of your hybrid data?  
HPE has the key.

## Learn more

[Create your AI advantage with HPE](#)

### Build your data foundation for AI

[HPE Ezmeral Data Fabric Software](#)

### Automate and scale complex data pipelines for ML models

[HPE Machine Learning Data Management Software](#)

### Meet the performance challenges of data-intensive AI workloads

[HPE GreenLake for File Storage](#)

Explore **HPE GreenLake**



**Chat now (sales)**



**Hewlett Packard  
Enterprise**

© Copyright 2024 Hewlett Packard Enterprise Development LP. The information contained herein is subject to change without notice. The only warranties for Hewlett Packard Enterprise products and services are set forth in the express warranty statements accompanying such products and services. Nothing herein should be construed as constituting an additional warranty. Hewlett Packard Enterprise shall not be liable for technical or editorial errors or omissions contained herein.

a50010178ENW, Rev. 2